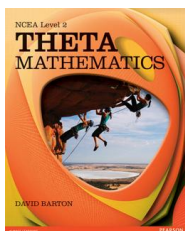


CORRECTIONS FOR THETA MATHEMATICS (4th Edition first published 2011) 2012  
(2<sup>nd</sup> printing) (as at 14 February 2015)

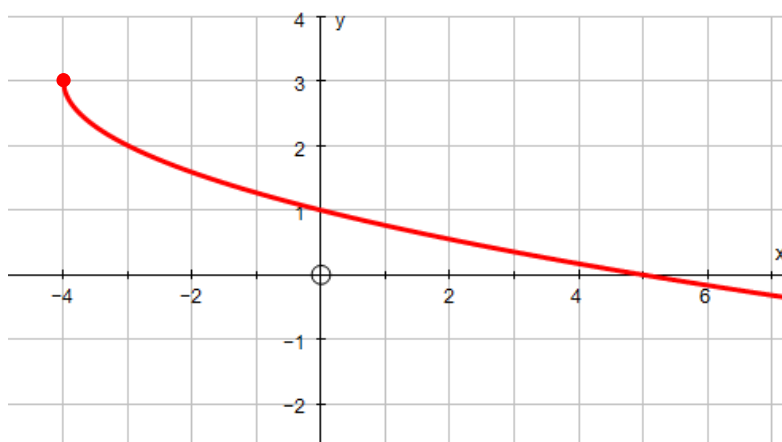


ISBN: 978-1-4425-4948-7

These include all mathematical corrections but do not include presentational errors. Pearson's policy is to correct all known errors whenever a textbook is reprinted, so that all errors reported from previous printings have been corrected.

The corrections given are for the most recent printing. To receive a list of corrections for an earlier printing of this text (as an attached Word file) please email [feedback@mathematics.co.nz](mailto:feedback@mathematics.co.nz). with details of the year the text was printed. This information is inside the front or back cover.

p60 In the graph of  $f(x) = 3 - \sqrt{x+4}$  the section between  $x = 0$  to  $x = 5$  should be slightly convex rather than concave - see this screenshot:



p194 Ex 12.03 #12 change '11 cm and 4 cm in diameter' to 'with radii 11 cm and 4 cm'

p244 Ex 16.02 #10b Change 'length' to 'width', change 'longest distance across' to 'shortest distance across through the centre' and change 'width' to 'length'

p304 In final sentence for the second example, change 'domain of  $f(x)$ ' to 'domain of  $f'(x)$ '

p334 The expression  $\frac{5}{2} \times 64$  should be  $\frac{5}{4} \times 64$

p489 Ex 3.02 #1e co-ordinates of the vertex are  $\left(-\frac{1}{2}, -2\frac{1}{4}\right)$

p499 Ex 5.02 #3c vertical asymptote is  $x = -2$

p531 Ex 14.04 #16 change  $6^4$  to 64